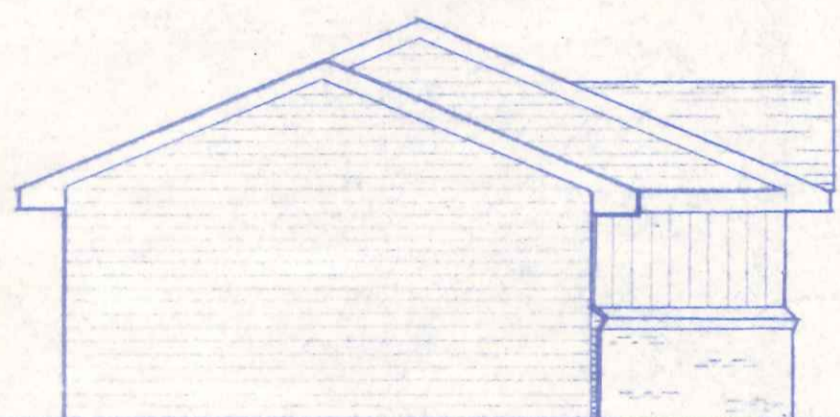


FRONT ELEVATION

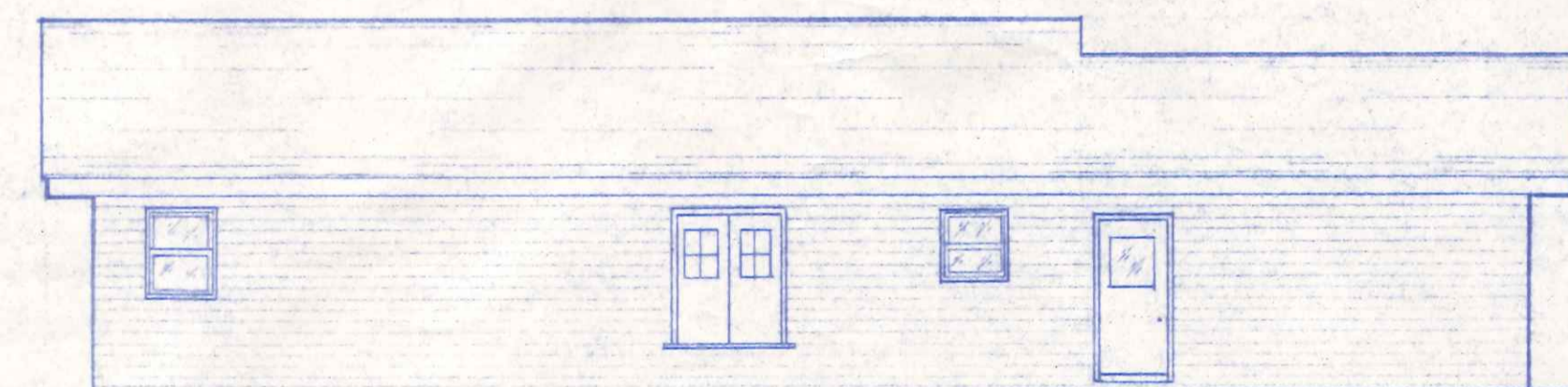
SCALE: 1/4" = 1'-0"

CITY OF NAPOLEON  
BUILDING DEPT.  
Plan. Approval  
By *R.W.W.* Date *10/5/82*



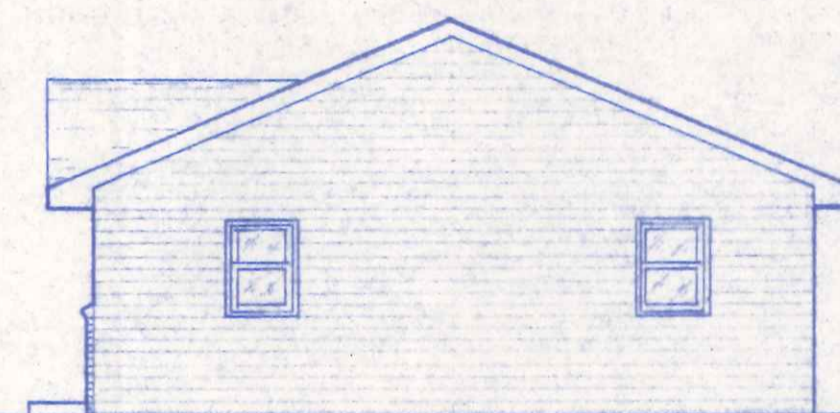
LEFT ELEVATION

1/8" = 1'-0"



REAR ELEVATION

1/8" = 1'-0"



RIGHT ELEVATION

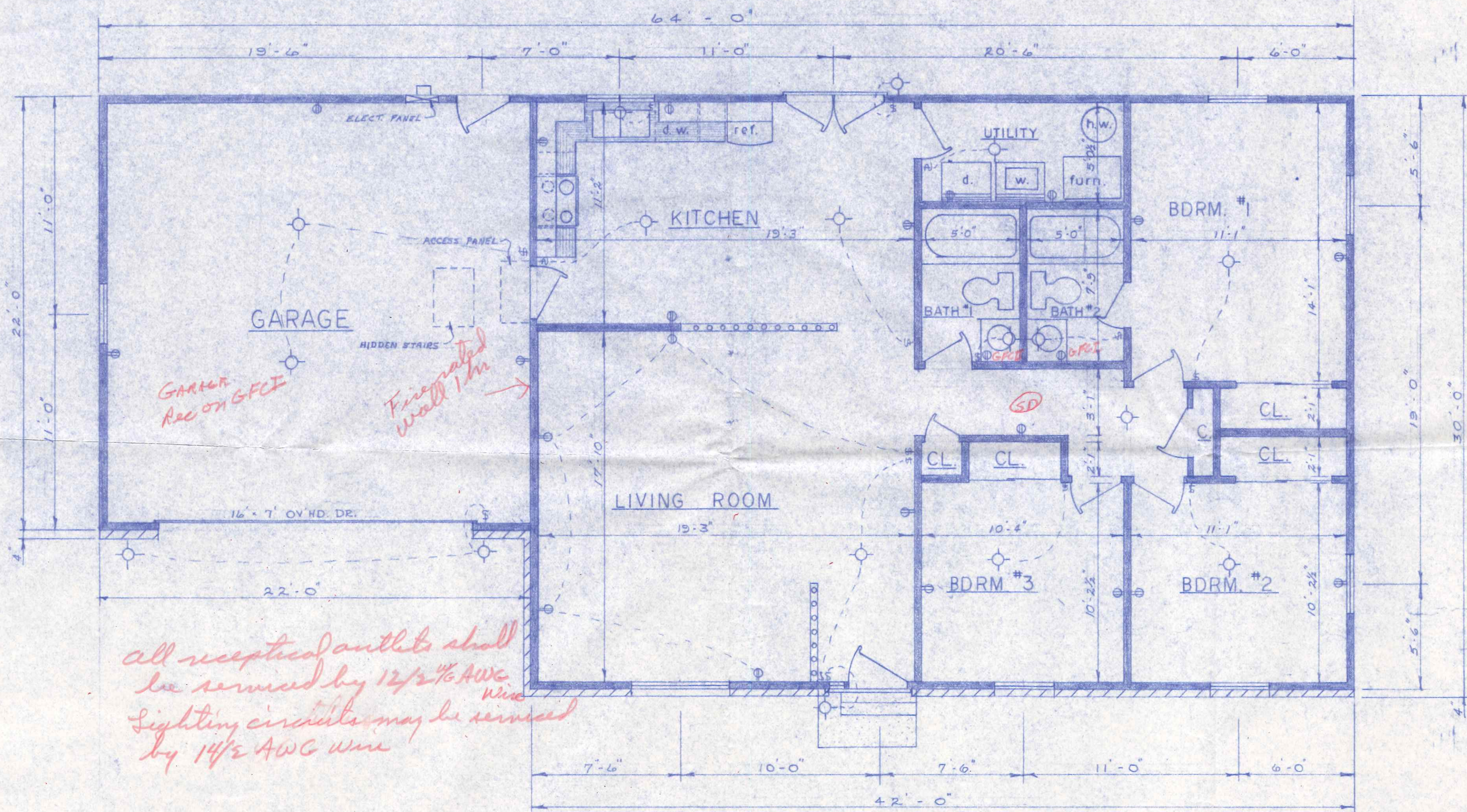
1/8" = 1'-0"

605 W. MAUMEE

2  
3

DWG. BY:  
R.W.W.  
DATE:  
JAN. '82

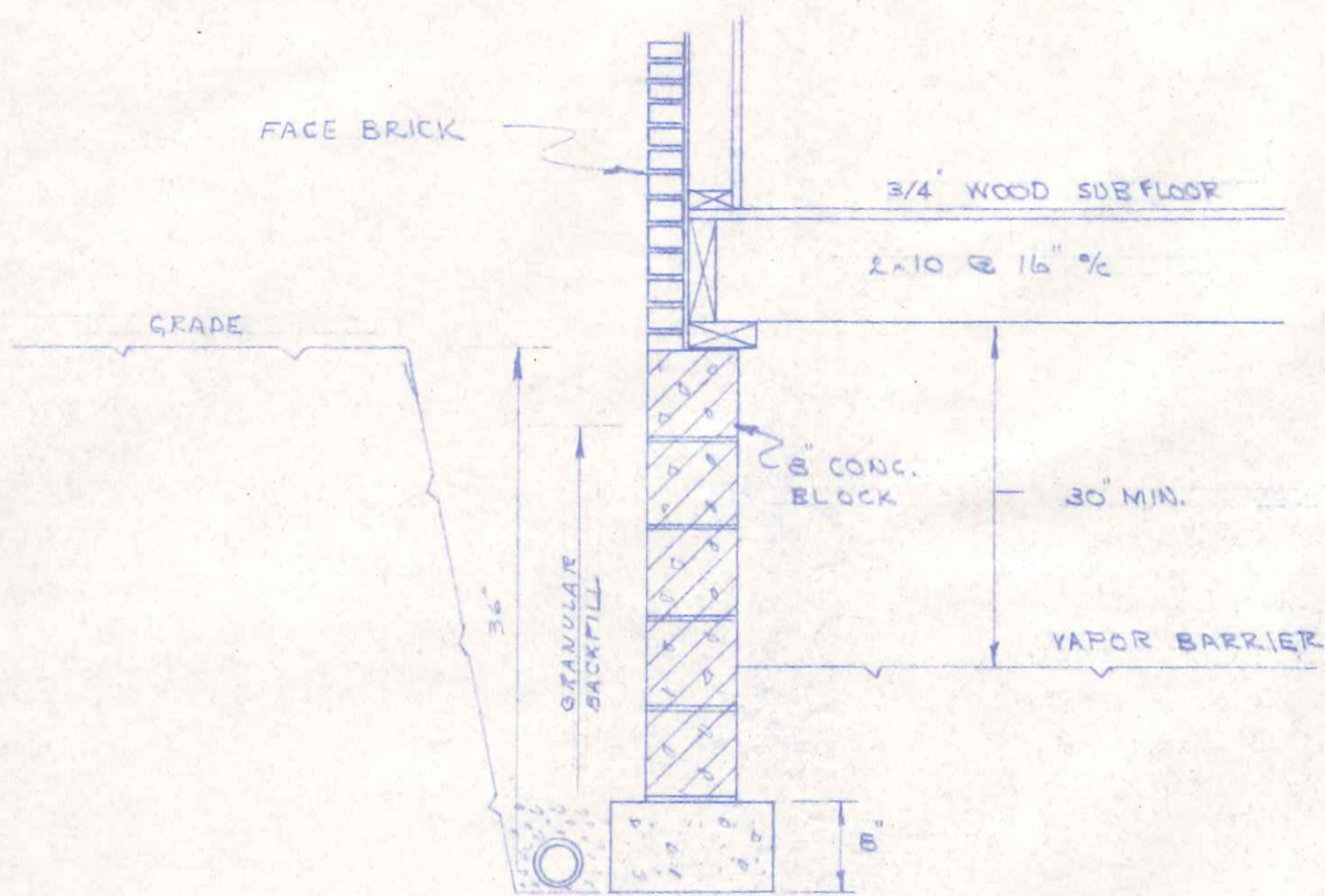
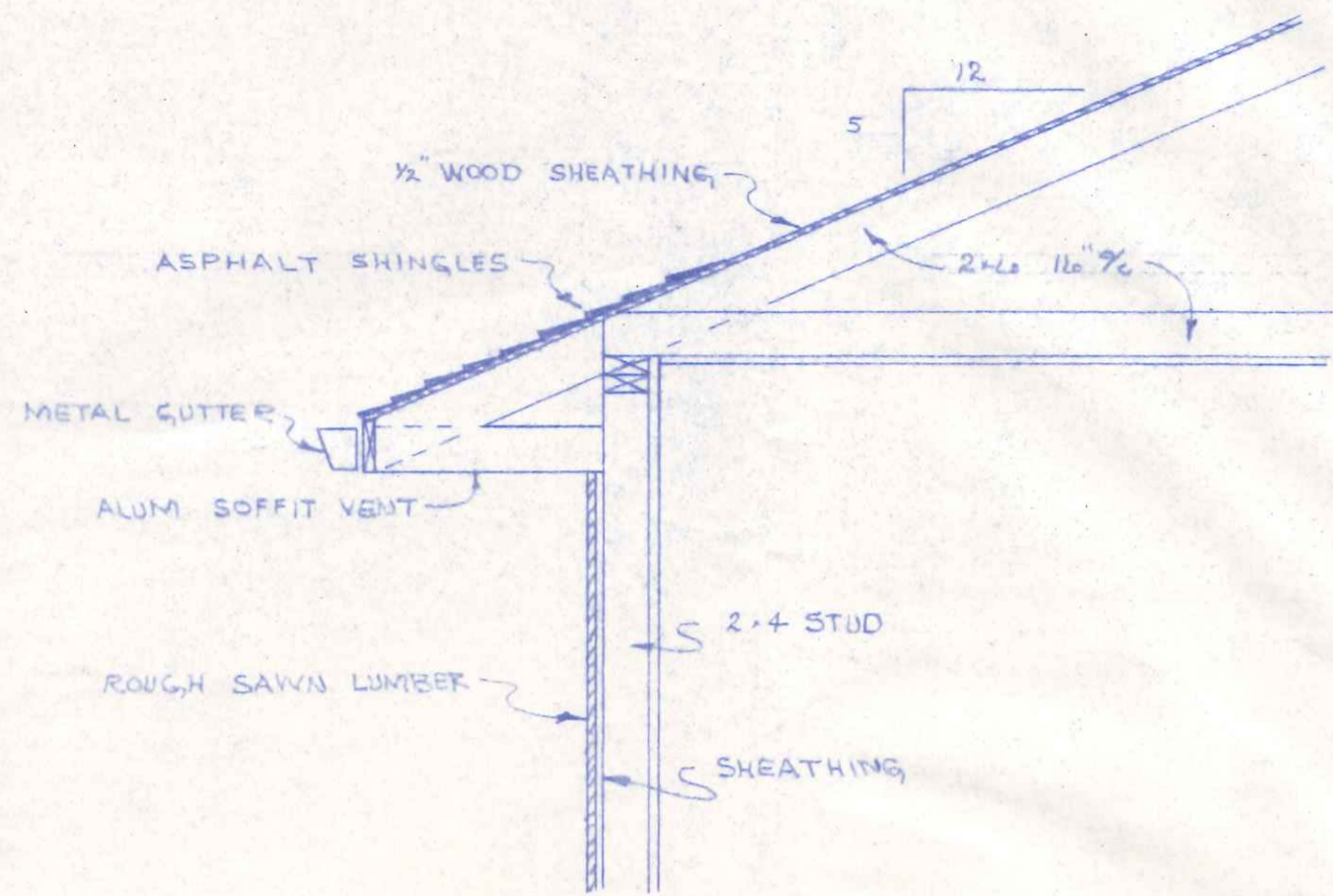
BECK'S CONSTRUCTION CO.  
PLAN NO. 123



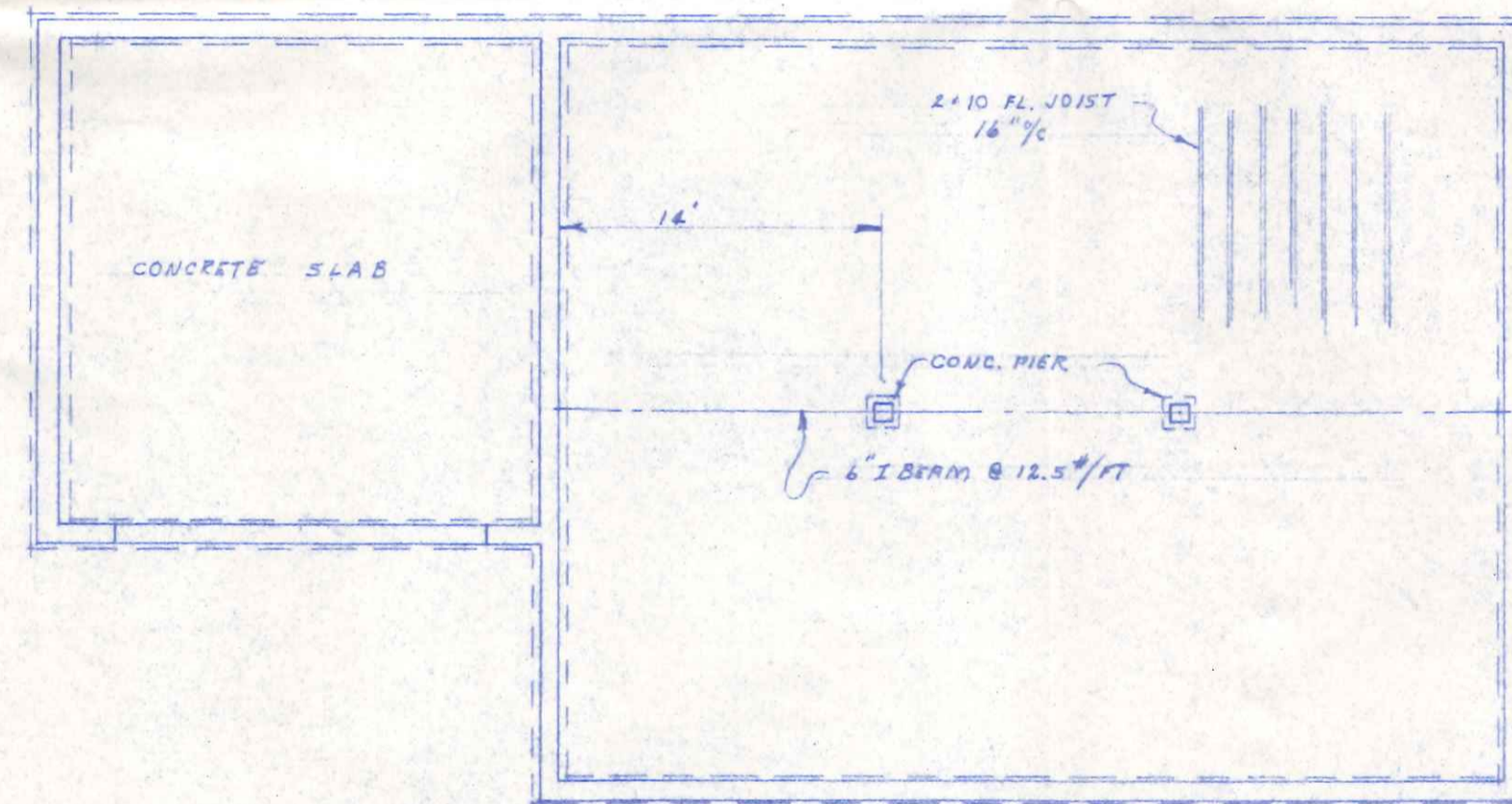
FLOOR PLAN  
SCALE: 1/4" = 1'-0"

DWG. BY:  
R. W. W.  
DATE:  
OCT. '80

BECK'S CONSTRUCTION CO.  
PLAN NO. 123



WALL SECTION DETAIL  
 3/4" = 1'-0"



FOUNDATION PLAN  
 1/8" = 1'-0"

3/3

DWG. BY:  
 R.W.W.  
 DATE  
 JAN. '82

BECK'S CONSTRUCTION CO.  
 PLAN NO. 123